

# COMMUNITY PROFILE

## LOCATION



Situated in British Columbia's southern interior region, the Village of Clinton is located on Highway 97, 40 kilometres north of the junction of the Trans Canada Highway 1 at Cache Creek.

Clinton is a small friendly community close to larger centres, but offering a life of quiet living in one of the most pristine natural environments in the world. Clinton and its surrounding area have the opportunity to become prime attractions for residents, businesses and investors.

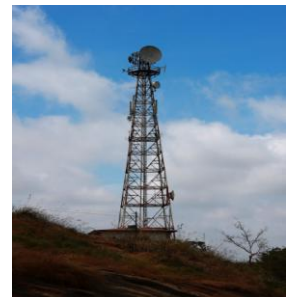
As a midway point between Vancouver and Prince George, Clinton serves as a centre providing amenities to both its own residents and the travelling public. Clinton's economic base is driven by the forest industry with other important employment sectors being ranching, retail trade and tourism. The entire region is experiencing growth in the tourism industry and Clinton frequently welcomes not only visitors from North America, but from around the world.

## OPPORTUNITY

For those entrepreneurs interested in business, Clinton is the perfect place to establish a commercial, light industrial or home based business. Fully serviced residential and commercial properties are available to encourage new business enterprise.

Clinton and the surrounding area are serviced with cell and internet connectivity enabling entrepreneurs to work from home and reside anywhere. The six business opportunities included in this portfolio are only some of the potential businesses that would enhance the Village and create a continued sustainable community. Amenities available in nearby communities of Ashcroft, 100 Mile House and Kamloops include, hospitals, shopping, airport, and many other services within a 40 minute drive.

Clinton is situated on a major highway corridor, with Ashcroft inland port located just 40 minutes away, enabling the transport of manufactured goods to market.



## **MAYORS MESSAGE**

Clinton is an undiscovered jewel of the Cariboo. Initially known as The Junction, it sits at the confluence of the two historic gold rush trails. There are numerous abandoned homesteads, wagon stops and line cabins in the area, all of which create a sense of adventure for the history buff or the outdoor photographer. Names such as Cougar Point, High Bar, Devil's Garden, and Porcupine Creek stir the imagination and offer endless exploring opportunities.

Tourism flourishes in Clinton, surrounded by majestic scenery, lakes, trails, and a Museum that is sure to please the history buff. Our tag line is "Where history meets Adventure."

The multitude of fishing lakes in the area can be accessed by day trips from Clinton. Overnight trips can be made to one of the many guest ranches, provincial parks or forest service campsites. Marble Range Wilderness Park and Edge Hills Wilderness Park offer exciting backpacking and horseback riding opportunities for the explorer.

Winter activities include cross country skiing , snowshoeing and snowmobiling. There are about 60 kms of cross country ski trails only minutes from the Village of Clinton. Snowmobiling to the meadows of Carson Mountain will give you the feeling of being on top of the world.

Strategically located half way between Vancouver and Prince George and also on the major north south route to Alaska, Clinton is the perfect location to set up a business or relocate and enjoy the serene lifestyle. We are open to business ideas, new ventures and marketing ideas. Council is actively pursuing growth to enhance our local economy and to provide opportunities for our residents.

Our people are friendly and welcoming of newcomers. I invite you to visit our Village and explore the opportunities that abound here.



Jim Rivett, Mayor  
Village of Clinton



Clinton Museum

## LIFESTYLE

Clinton's relaxing lifestyle and low cost of living is well suited for seniors and young working families.

The community offers a safe and peaceful environment that includes all the amenities of a sustainable community including education, health care and recreational opportunities. Education is available from preschool through grade 12. Two hospitals are within 40 minutes of the community. There is a medical clinic staffed by a full time nurse practitioner in Clinton. Emergency services include a fire department, ambulance and R.C.M.P.

Current infrastructure, includes a modern water and sewage system, that is capable of serving a population double in size. Clinton and area also boast over 90 businesses to serve your needs. Clinton truly offers rural lifestyle at its finest.



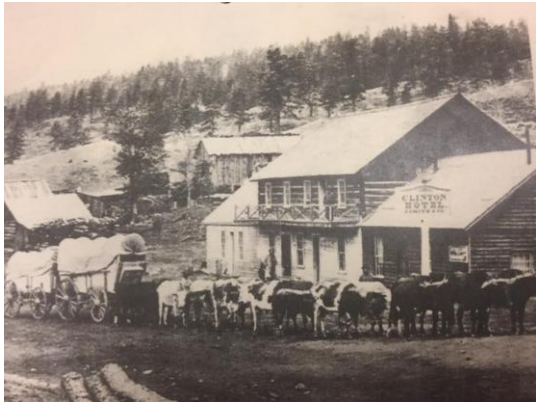
## HISTORY

The land inhabited by the Shuswap people gave way to settlement in the mid 1800's with the discovery of gold and the development of the Cariboo wagon roads.

One road was constructed from Yale while another was pushed through from Harrison to Lillooet. From Lillooet known as Mile 0, the road continued a further 47 miles over Pavilion Mountain, around Kelly Lake and through Cut-Off-Valley to converge with the Yale-Cariboo road. The community that was formed at the confluence of the two roads became known as Junction or 47 Mile. In 1863 the townsite was officially renamed "Clinton" by Queen Victoria in honour of Lord Henry Pelham Clinton.

During the Cariboo Gold Rush, Clinton was a busy junction on the wagon road to the gold fields of Barkerville. The location of the settlement made it an ideal resting place for weary travellers and miners en route.

Once "Gold Fever" subsided, the ranching industry developed, some of the original ranches such as Maiden Creek Ranch, Mound Ranch and Pollard Ranch are still operational today.



Top Left – Famous Clinton Hotel circa 1869

Bottom Left – BX Express Company as seen near Clinton in 1902

## RECREATION

Recreational opportunities abound in the area throughout the seasons with facilities such as ice arena, curling rink, community hall, soccer and baseball fields, parks and a wilderness backcountry. During spring, summer and fall hunting, fishing, hiking, camping, biking and many other activities are plentiful, and during the winter months ice fishing, cross country skiing, snowshoeing along Big Bar Ski Trails and snowmobiling call the outdoor enthusiast. Clinton's scenic surroundings and picturesque landscape are truly a nature lovers paradise.

For the History enthusiast, our Museum and antique shops will spark your imagination of days gone by and keep you searching for that hidden treasure. Come and explore "where history meets adventure".



Early morning trail ride at Chasm Park



Music in the Park



Snowshoeing & Cross Country Skiing



Fishing



Ice Fishing

## COMMUNITY EVENTS

Heritage Week held in May, is the highlight of the year. Heritage Week begins on the Victoria Day weekend with the Annual Ball, during the week there is a Old Timers Tea, Museum open house and winds up the following weekend with the Rodeo and Parade. The Annual Ball is a long standing tradition, commencing from January 1868, and is the oldest consecutive event of its kind in Canada.

Summer events include Canada Day celebrations, fishing derby's and Music in the Park. During the winter there are family fun days at the cross country ski trails, ice fishing derby's, curling and hockey events, other events such as flea markets, art shows, auctions, dances and fundraisers throughout the year keep the community busy.

Clinton has recreational and community opportunities for everyone, no matter what your interests may be, we have something for you to do!



Canada Day Kids Painting Station



Rodeo excitement – Steer Wrestling



Dancing the night away at the Annual Ball

The Village of Clinton is a quaint community with 650 residents that are happy to welcome you to their community. The lifestyle is relaxed and full of recreational opportunities, with city amenities just 40 minutes drive away. Clinton is a wonderful place to grow up, raise a family or enjoy your senior years. Business opportunities are plentiful for the entrepreneurial spirit . ***We invite you to visit, stay , invest, work and play.***

VILLAGE OF CLINTON | BRITISH COLUMBIA | CANADA

## CLINTON & SURROUNDING AREA

